



# MONTHLY MEMBERSHIP PROGRESS REPORT

District 105 C

Results as of: 03/31/2018

GMT: JOOST PAIJMANS

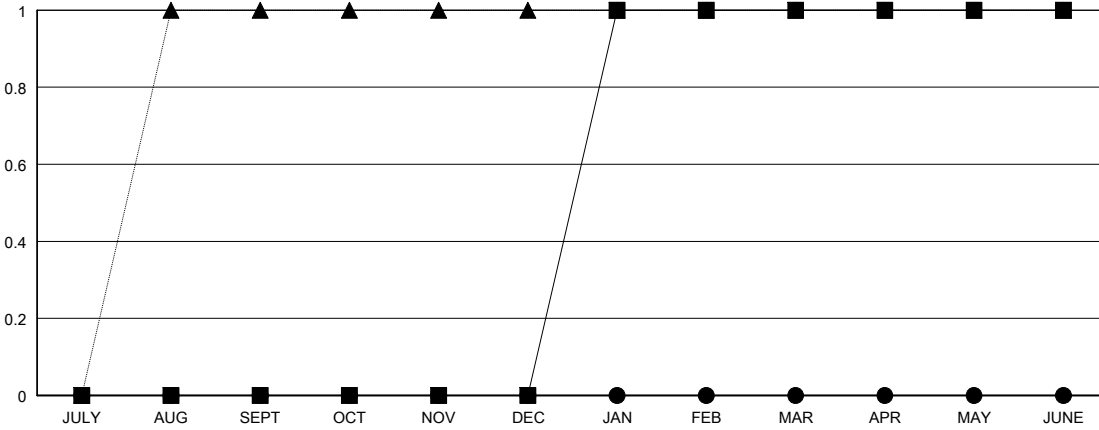
LOCATION ENGLAND

GMT CA

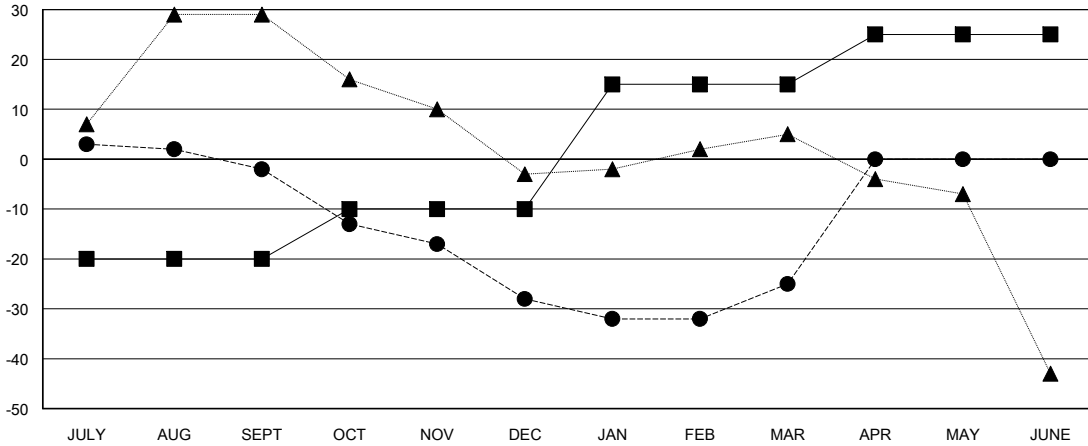
Clubs			
RESULTS FOR 2017-2018			
QUARTER	NEW CLUB GOAL	NEW CLUBS	DROPPED CLUBS
JULY/AUG/SEPT	0	0	0
OCT/NOV/DEC	0	0	0
JAN/FEB/MAR	1	0	0
APR/MAY/JUNE	0	0	0

Members			
RESULTS FOR 2017-2018			
QUARTER	MEMBER GROWTH NET GOAL	MEMBER GROWTH ACTUAL	DROPPED MEMBERS ACTUAL (including transfers)
JULY/AUG/SEPT	-20	12	14
OCT/NOV/DEC	10	8	31
JAN/FEB/MAR	25	31	27
APR/MAY/JUNE	10	0	0

GOALS AND ACTUAL NEW CLUBS CUMULATIVE



GOALS AND ACTUAL MEMBERS CUMULATIVE



DROPPED CLUBS: 0	28 CLUBS OF 51 ADDED 1 OR MORE NEW MEMBERS	<u>GENDER DISTRIBUTION</u>	
DROPPED MEMBERS		MALE	577 (67.56%)
DECEASED	14	FEMALE	277 (32.44%)
CLUB CANCELLED	0	Women Percentage Fiscal Year Goal: 30%	
OTHER	58	TOTAL FAMILY UNIT MEMBERS	113
TOTAL	72	FAMILY MEMBERS PAYING HALF DUES	58

[CLICK HERE FOR CUMULATIVE MEMBERSHIP DATA](#)